

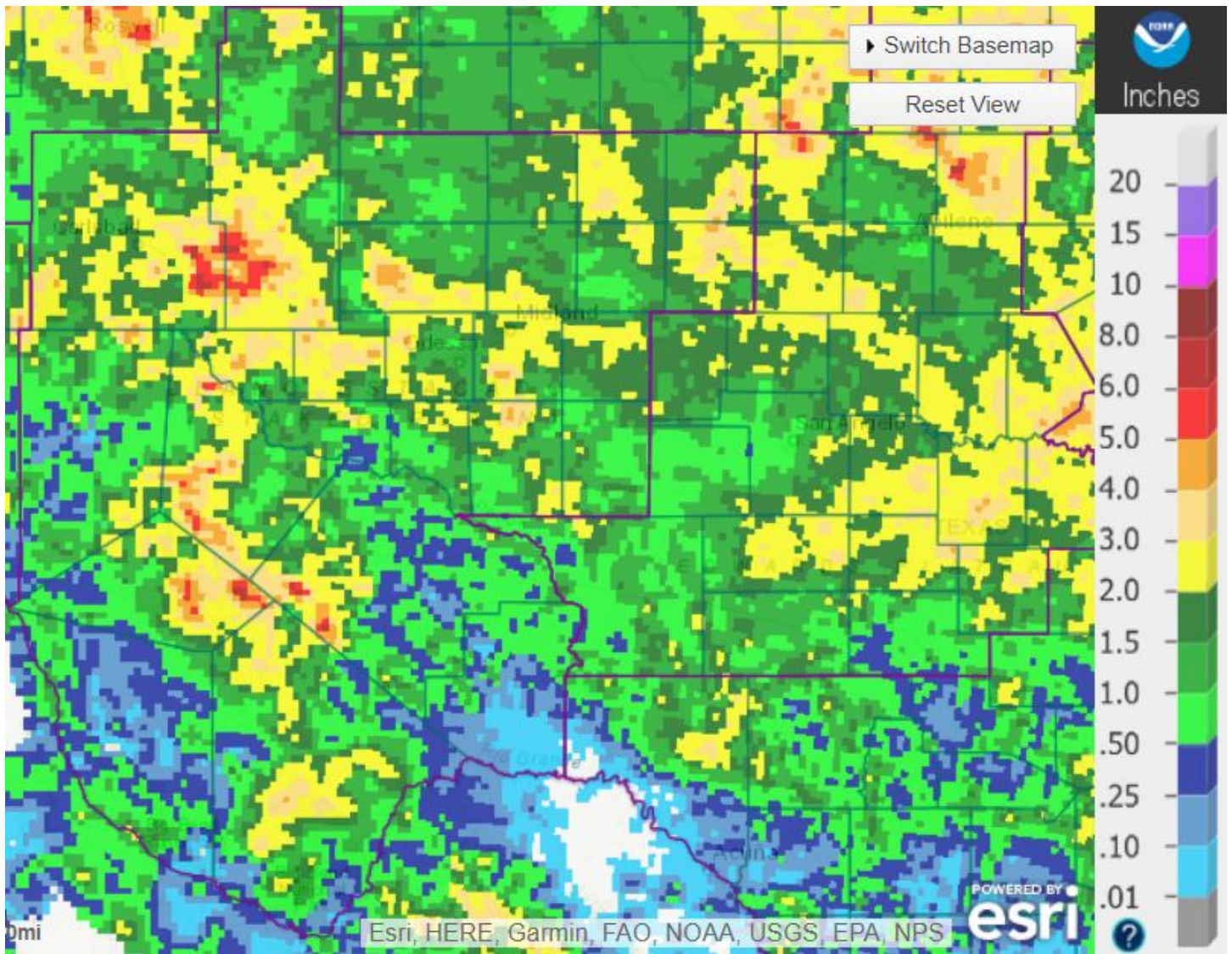


Big Spring	KBGP	0.85"	0.09"
Culberson County	KVHN	1.22"	0.00"
Gaines County	KGNC	2.03"	0.66"
Hobbs, NM	KHOB	1.65"	0.16"
Lamesa Municipal	KLUV	1.41"	0.45"
Marfa	KMRF	0.81"	0.20"
Midland Airpark	KMDD	0.25"	0.25"
Pecos County	KPEQ	0.54"	0.00"
Presidio County	KPRS	0.75"	0.09"
Reagan County	KE41	0.58"	M
Snyder	KSNK	1.25"	3.44"

Some other locations in the HSA that received notable amounts of precipitation for June were:

Waste Isolation Power Plant, Eddy County	3.94"
Queen, Eddy County	4.06"
Persimmon Gap, Brewster County	4.13"
Fort Davis, Jeff Davis County	4.99"

91 locations reported rainfall for the month of June, for an HSA average of 1.68". This is the first time the HSA average has been over 1" since August 2021.



### June Precipitation

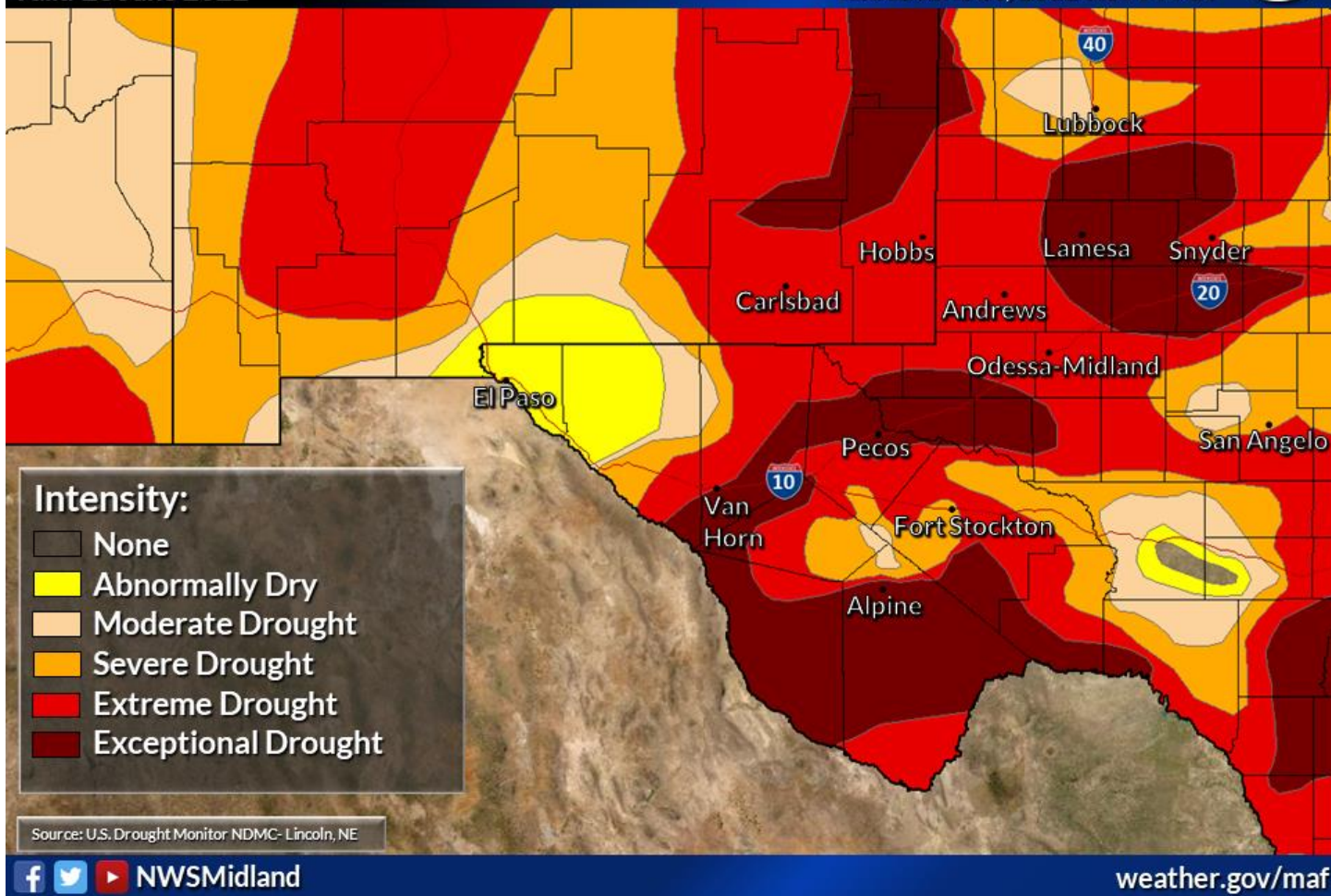
Normal June precipitation for Midland International Air and Space Port is 1.80". Total precipitation for 2022 ending July 1<sup>st</sup> was 2.20", or 3.79" below normal.

# Latest Drought Conditions

Weather Forecast Office  
Midland/Odessa, TX  
Issued June 30, 2022 5:57 PM CT



Valid 28 June 2022



Reservoir levels across the HSA averaged 49.6% of conservation capacity as of July 1<sup>st</sup>:

Reservoir (County, State)	July 1 Conserv Cap (%)	June 1 Conserv Cap (%)
JB Thomas (Scurry, TX)	31.3	32.9
Colorado City (Mitchell, TX)	63.2	65.5
Champion Creek (Mitchell, TX)	63.2	64.8
Natural Dam Salt Lake (Howard, TX)	48.5	48.4
Moss Creek (Howard, TX)	63.0	78.0
Brantley (Eddy, NM)	20.0	32.0
Avalon (Eddy, NM)	41.0	47.0
Red Bluff (Reeves, TX)	66.4	69.2

## Non-Routine Products Issued for June:

Flash Flood Watches (FFA): 0  
Flash Flood Warnings (FFW): 9  
Flash Flood Statements (FFS): 10  
Flood Advisories/Statements (FLS): 42

Flood Warnings (FLW): 0

**Total Non-Routine Products Issued: 61**

**cc: email: COE ABQ, HIC, IBWC ELP, IBWC PRD, LCRA, NWS ABQ, NWS EPZ, NWS LBB,  
NWS MAF, NWS SJT, SRH, TAMU, TCEQ, USGS CNM, USGS SJT, WGRFC**